



Tak +8613821646858

Email: youchengsteelpipe@163.com

youchengtechnology@163.com

ADD: No. 2, Science and Technology Avenue,
Daqiu Zhuang, Jinghai District, Tianjin



天津友成科技有限公司

Tianjin Youcheng Technology Co., LTD

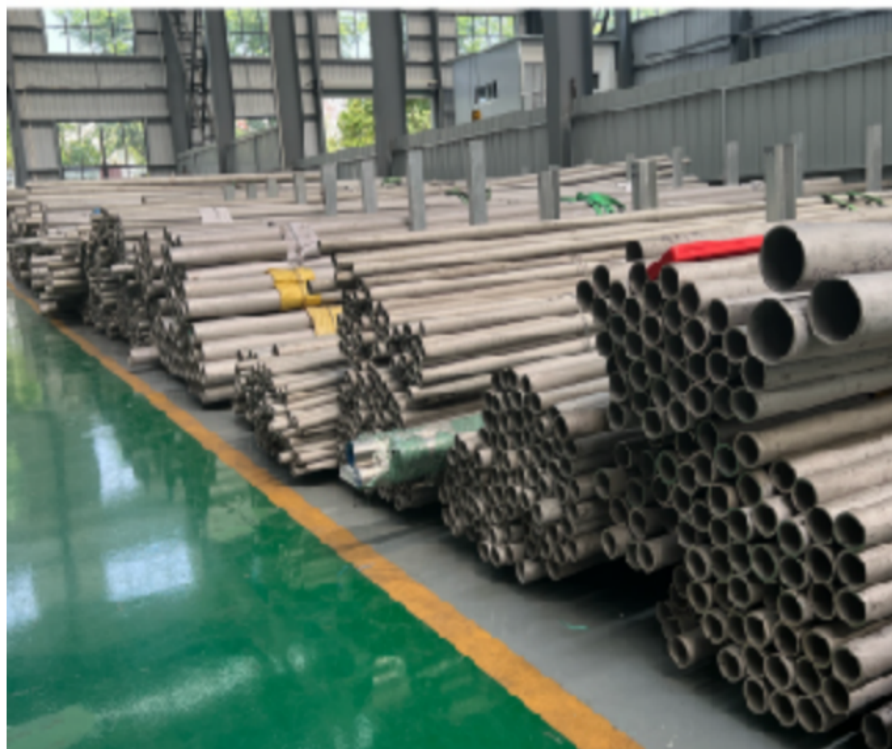


OEM&ODM

Spot Sale

Factory Supply

One-stop Service



- ◆ Company Image
 - companypronte
 - Enepisequataton
 - Deveamertpathway
- ◆ Product Catadogue
 - Caton steel
 - Channel stee series
 - Alloy series
 - Samtes Stet
 - coor coatng
 - Oil pipe series
 - PPGL and PPGL series
 - NM Plates

A large steel enterprise in China, dedicated to the steel industry for over 20 years, currently has more than 10 production lines to meet customer demands.

Table of Contents

Company Profile

From the moment we founded Tianjin Youcheng, we had a big Idea: Make the best stainless steel products you can find.

We have been working very hard to achieve this goal for 20 years. We have the coolest machines and technologies that make our products even better, and people start to notice us because of that. We are now all over the country, manufacturing a variety of stainless steel products to meet the needs of different groups of people.



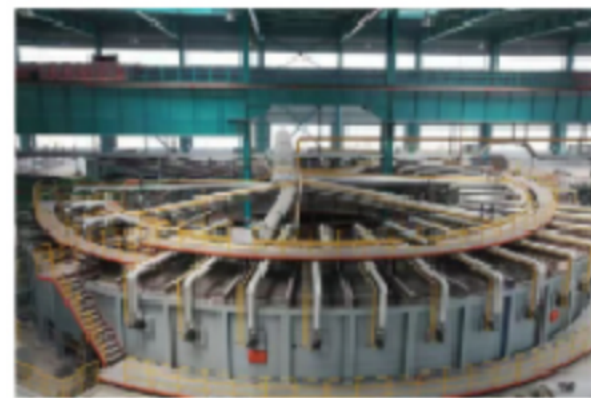
We are the first place to buy stainless steel products. Whether you need sheet, coil, tube, bar or some special products, we can meet your needs. We're always coming up with new things, trying to figure out what people need next. Our team knows a lot about stainless steel, so everything we make is very strong, durable and beautiful to look at. We had big dreams. We want to be the best at what we do and make products that are not only good for the present, but also for the future. We want everyone to know that when they choose Youcheng, they get the best, and we are constantly improving. It's all about making life better for everyone everywhere and building a better world with quality stainless steel - quality, innovation, collaboration

EMTERPRSEQUAUFCAION



DEVELOPMENT HISTORY

Tianjin Youcheng Technology Co, LTD, is Since 2000,China has entered the steel production and sales market, and quickly occupied a large share, since 2005 has participated in a number of foreign heavy engineering projects. For example Morupule B4X150MW coal fired Power Station project in Botswana; 2x300MW coal fired Foweston project in Maryland, Philippines; 4x175MW coal fired Power Station project in Hunsha, Laos; 4X175MW Hydropower Station project in Zongulu, Nigeria; 500 kV power transmission and transformer project in Pakistan; Ethiopia Reppele 2X25MW etc..



The background image shows a vast industrial warehouse with high ceilings and steel beams. The floor is filled with numerous stacks of metal products, likely steel plates or coils, arranged on wooden pallets. The stacks are organized in rows, and the overall scene conveys a sense of large-scale industrial production and storage. A worker in a yellow safety vest is visible in the middle ground, providing a sense of scale.

HOT SALE PRODUCTS

Industrial pipe

Welded pipe

Seamless pipe

Carbon steel plate

Carbon steel coil

Galvanized pipe

Aluminum plate

Galvanized sheet

Galvanized coil

INDUSTRIAL TUBE

Product characteristics

Corrosion resistance
High temperature resistance
Thermal stability
Machinability

Application area

Bridge, boiler, shipbuilding, power plant, pipeline, mechanical processing

Standards :

GB/T3091-2001, BS 1387-1985,

DIN EN 10025, EN10219, JIS G3444-2004

ASTM A53 SCH40/80 STD, BS EN10255-2004

Outside diameter :

219mm-3620mm or as required



Wall thickness:

0.6 mm - 20 mm or as required

Length:

1m, 4m, 6m, 8m, 12m

Material Quality:

Q195, Q215, Q235, Q345, S235R, GRB-D, STK500



WELDED PIPE

Product characteristics

Corrosion resistance
High temperature resistance
Thermal stability
Machinability

Application area

Bridge, boiler, shipbuilding, power plant, pipeline, mechanical processing

Standards :

GB/T3091-2001, BS 1387-1985,

DIN EN 10025, EN10219, JIS G3444-2004

ASTM A53 SCH40/80 STD, BS EN10255-2004

Outside diameter :

219mm-3620mm or as required



Wall thickness:

0.6 mm - 20 mm or as required

Length:

1m, 4m, 6m, 8m, 12m

Material Quality:

Q195, Q215, Q235, Q345, S235R, GRB-D, STK500



SEAMLESS TUBE

Product characteristics

- Corrosion resistance
- High temperature resistance
- Thermal stability
- Machinability

Application area

Bridge, boiler, shipbuilding, power plant, pipeline, mechanical processing

Standards :

- API 5L, ASTM A106, GrB, ASTM A106
- ASTMA106, ASTM A53, API 5L, ASTM A179
- ASTM A210, ANSI B3610

Material Quality:

- A53(A,B), A105(A,B), Q345, 16Mn, 10#, 20#, 45#, S235IR, S355IR, ASTM A252, Gr2, Gr3, ST37, ST42, ST52, GrB, X42, X46, X52, X5, X6, X65, X70 etc



GALVANIZED PIPE

Product characteristics

- Corrosion resistance
- High temperature resistance
- Thermal stability
- Machinability

Application area

Bridge, boiler, shipbuilding, power plant, pipeline, mechanical processing

Standards:

- API 5L, ASTM A53-2007, ASTM A671-2006
- ASTM A252-1998, ASTM A450-1996
- ASME B36, 10M-2004, ASTM A523-1996
- BS EN10296, BS 6323, BS 6363

Material Quality:

- 10#, 20#, 45#, 16Mn, A53(A,B), Q195, Q235, Q345, Q195, Q215, ST37, ST42, ST37-2, ST35-4, ST52, 4ST3540-600g/m²

Wall thickness :

1mm-150mm(SCH10-XXS) or as required

Outer diameter :

6mm-2500mm(3/8"-100#) or as required

Zinc coating :

Galvanized coating



CARBON STEEL COIL

Product characteristics

- Corrosion resistance
- High temperature resistance
- Thermal stability
- Machinability

Application area

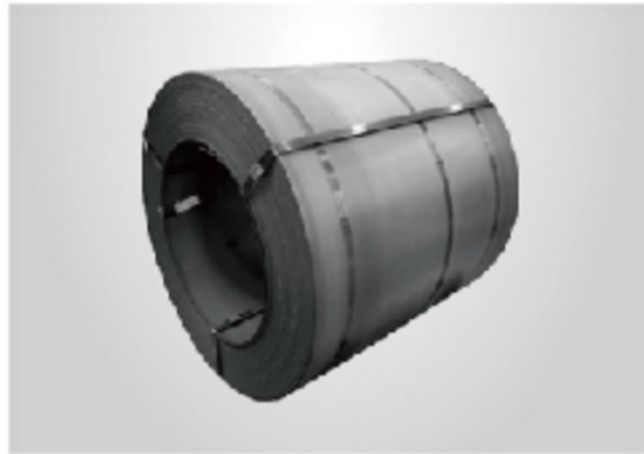
Bridge, boiler, shipbuilding, power plant, pipeline, mechanical processing

Standards :

ASTM A5V/ASTM A573/ASTM A283/GB-T/700-2006/GB-T/711-2008
IS 3101/IS 3131/IS 3106

Width:

500mm-1800mm or as required



Thickness:

0.1mm-300mm or as required

Surface treatment:

Black, galvanized, coated, oiled, painted, etc.

Material Quality:

Q195、Q215、Q235B、Q345B、S235JR、S355JR、SS400 etc



CARBON STEEL PLATE

Product characteristics

- Corrosion resistance
- High temperature resistance
- Thermal stability
- Machinability

Application area

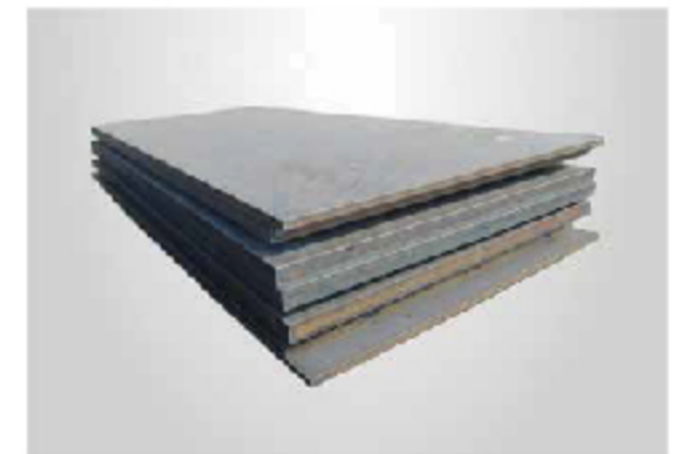
Bridge, boiler, shipbuilding, power plant, pipeline, mechanical processing

Standards:

ASTM A3/ASTM A573/
ASTM A283 GB-T/700-2006 GB-T /711-2008
JIS G3101/IS 3131/IS 3106

Width:

500mm-1800mm or as required



Thickness:

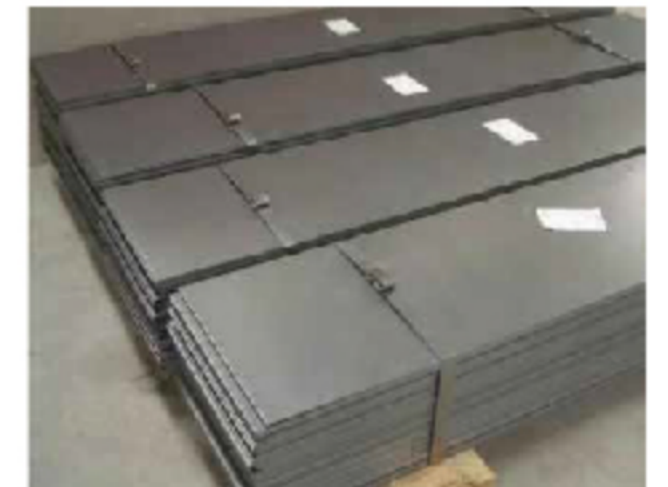
0.1mm-300mm or as required

Surface treatment:

Black, galvanized, coated, oiled, painted, etc.

Material Quality:

Q195、Q215、Q235B、Q345B、S235JR、S355JR、SS400 etc



TINPLATE

Product characteristics

- Corrosion resistance
- High temperature resistance
- Thermal stability
- Machinability

Application area

Bridge, boiler, shipbuilding, power plant, pipeline, mechanical processing

Standards:

JIS G3303 GB-T2520-2000

ASTM A623 BS EN 10202

Material Quality :

MR SPCC

Width:

600-1200mm or as required



Thickness:

600-1200mm or as required

Coating:

1.1/1.12.8/2.85.6/5.6

Temper:

T1、t2、t3、t4、t5、dr7、dr8、dr9、th550、th 580、th 620、th660



GALVALUME COIL

Product characteristics

- Corrosion resistance
- High temperature resistance
- Thermal stability
- Machinability

Application area

Bridge, boiler, shipbuilding, power plant, pipeline, mechanical processing

Standards:

JIS G3302 ASTM A653M EN10327 DIN17162 EN

10142 EN10147

EN10292 JIS G3302.

Material Quality:

DX51D+AZ、DX52D+AZ、DX53D+AZ、DXS4D+

AZ、S220GD+AZ、

DXS1D+AZ、SGCC、A653 etc

Thickness:

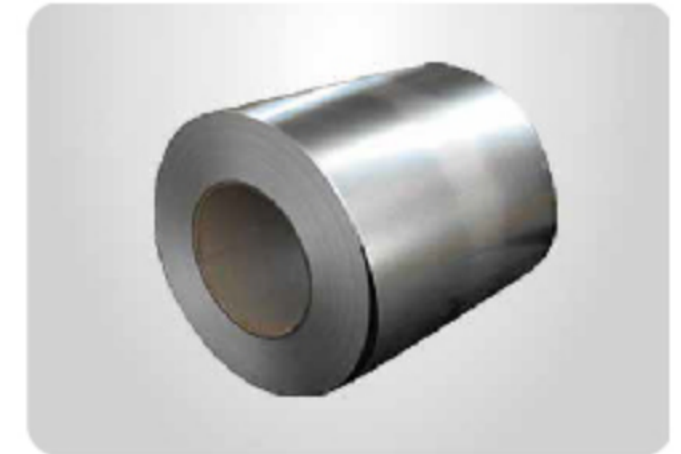
0.2mm~6.0mm or as required

Surface treatment:

20mm-1550mm or as required

Coating:

AZ30-AZ600g/m2



GALVANIZED SHEET

Product characteristics

Corrosion resistance

High temperature resistance

Thermal stability

Machinability

Application area

Bridge, boiler, shipbuilding, power plant, pipeline, mechanical processing

Standards:

IS G3302 ASTM A653M EN10327 DIN17162

EN 10142 EN10147 EN10292 IS G3302

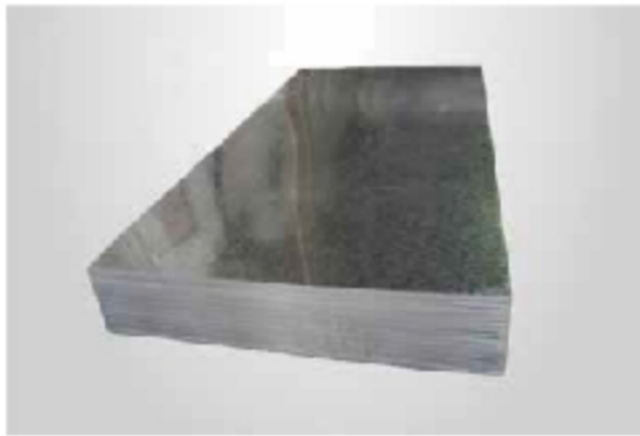
Zinc coating:

600g/M²

Rank:

DX51D+Z, DX52D+Z, DX53D+Z, DX54D+Z

Z, S220GD+Z, DX51D+Z SGCC A653etc



Thickness:

0.20mm-6.0mm or as required

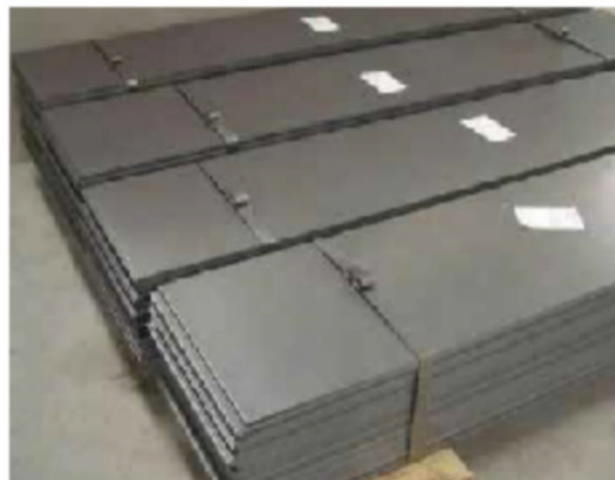
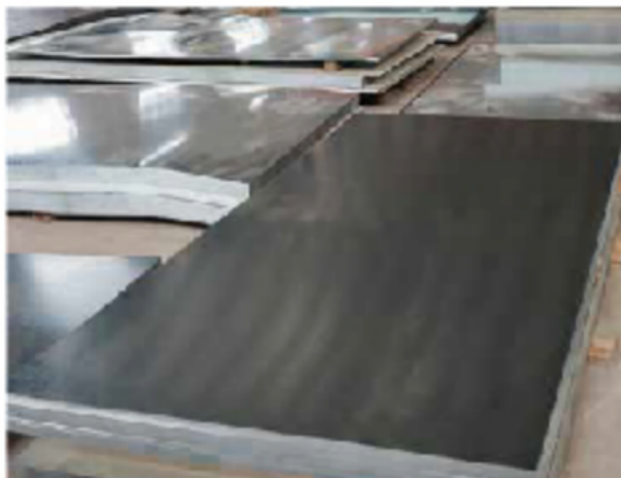
Surface treatment:

Galvanized, PVC black and painted, 40.

transparent oil, anti-rust oil

Width:

600mm-1250mm or as required



GALVANIZED COIL

Product characteristics

Corrosion resistance

High temperature resistance

Thermal stability

Machinability

Application area

Bridge, boiler, shipbuilding, power plant, pipeline, mechanical processing

Standards:

IS G3302 ASTM A653M EN10327 DIN17162 EN

10142 EN10147 EN10292 JIS G3302

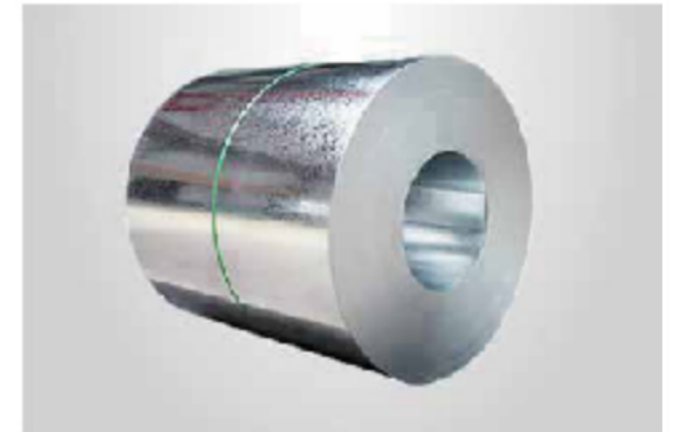
Zinc coating:

40-600g/M²

Rank:

DX51D+Z, DX52D+Z, DX53D+Z, DX54D+Z,

S220GD+Z, DX51D+Z SGCC, A653etc



Thickness:

0.20mm-6.0mm or as required

Surface treatment:

Galvanized, PVC black and painted,

transparent oil, anti-rust

Width:

600mm-1250mm or as required





CHANNEL STEEL SERIES

Channel

Steel

Angle

Steel

I-beam

Steel sheet

pile

CHANNEL STEEL

Product characteristics

- Corrosion resistance
- High temperature resistance
- Thermal stability
- Machinability

Application area

Building structures, curtain wall engineering, mechanical equipment and vehicle manufacturing

Length:

1m-12m or as required

Material Quality:

Q235, Q345, SS400, ST37-2, ST52, Q420, Q460, S235JR, S275J

Standards:

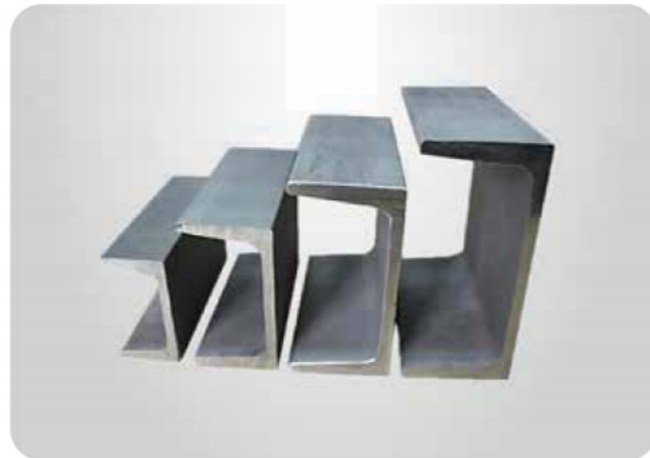
AISI, ASTM, DIN, JIS, GB, EN

Thickness:

4mm-35mm or as required

Surface treatment:

Black, galvanized, Coated, oiled, painted, etc.



GALVANIZED COIL

Product characteristics

- Corrosion resistance
- High temperature resistance
- Thermal stability
- Machinability

Application area

Beams, Bridges, transmission towers, lifting and transportation machinery

Standards:

AISI ASTM DIN JIS GB JIS SUS EN

Material Quality:

Q195, Q235, 10#, 20#, 35#, 45#, Q215, Q235, 304, 316, 20Cr, 40Cr, 20CrMo, 35CrMo, 42CrMo, 40CrNiMo, GCr15, 65Mn, 50Mn, 50Cr, 3Cr2W8V, 20CrMnTi, 5CrMnMo

Thickness:

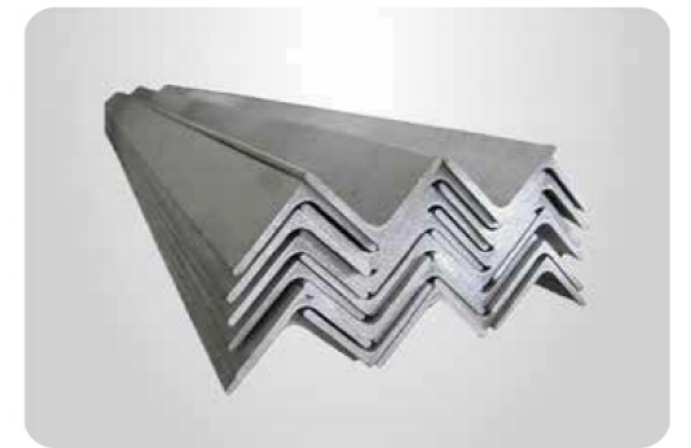
3mm-24mm or as required

Surface treatment:

Black, galvanized, Coated, oiled, painted, etc.

Length:

1m-12m or as required



L-BEAM

Product characteristics

Corrosion resistance

High temperature resistance

Thermal stability

Machinability

Application area

Engineering, mills, Bridges, highways

Standards:

National standard, GB/T11263-2017BS

Material Quality:

Q235b Q345b A36

Surface treatment:

Black galvanized, Coated, oiled, painted, etc.

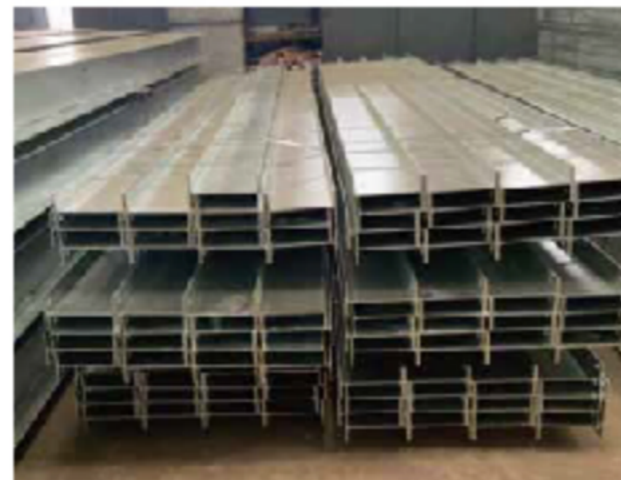


Thickness:

6mm to 28 mm or as required

Length:

6-12m or as required



STEEL SHEET PILE

Product characteristics

Corrosion resistance

High temperature resistance

Thermal stability

Machinability

Application area

Factories, roads, waterway engineering, Bridges, buildings

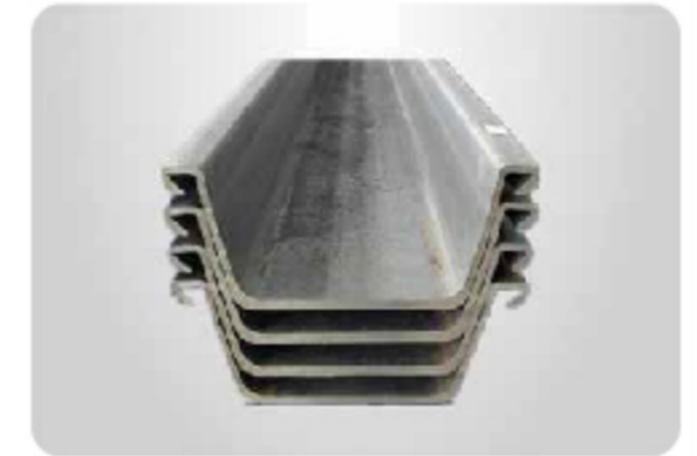
Standards:

GB/T20933, ISA5528, ISA5523,

EN10248

Surface treatment:

Black galvanized, Coated, oiled, painted, etc.



Length:

5m to 12m or as required

Material Quality:

S235, S330, S355, S390, S430, SY295,

SY390, SYW295, SYW390, Q235, Q345



The image shows a variety of aluminum alloy products. On the left, there are several large, cylindrical pipes or tubes. In the foreground, there are several smaller, circular bars or rods. On the right, there are sheets of aluminum alloy, some of which are stacked and show a brushed or mill finish. The background is a light gray, semi-transparent overlay.

ALLOY SERIES

Alloy board sheet

Alloy pipe

Alloy coil

Alloybar

ALLOY BOARD SHEET

Product characteristics

Corrosion resistance

High temperature resistance

Thermal stability

Machinability

Application area

Bridges, boilers, shipbuilding, automobiles, roofing, electricians

Classification:

Monel INCONEL Hastelloy nickel

Standards:

APISL、ASTM、A106 GrB、ASTM、A53 GrB

ASTMA179/A192/A213/A210/370WP91.WP11

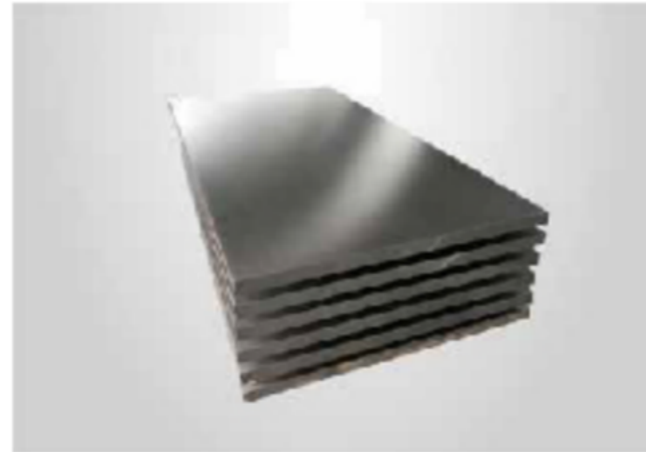
Material Quality:

15CrMoG、35CrMo、12Cr1MoVG、10CrMo910

T91(钢研102)、A335P11、A35P12、A335P22、

A335P91、A213T11、A213T12、SA106B、SA106CA33GR1、A333GR6、ST458-H、12C2MoN

VIB



Thickness:

0.1mm 300mm or as required

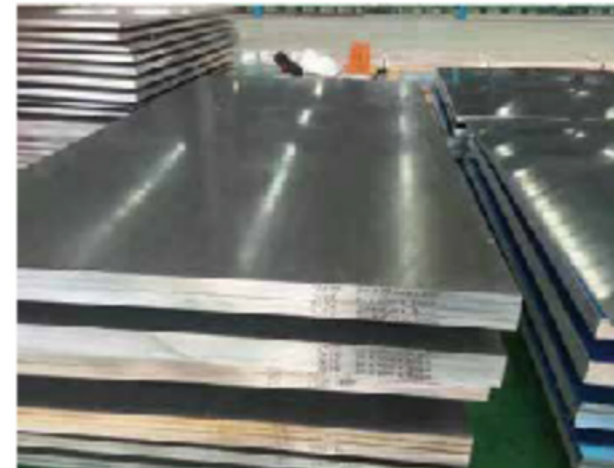
Width:

2m-3.5m or as required

Surface treatment:

Black paint varnish, antirust oil, hot dip galvanizing, cold galvanizing

.3PE



ALOYPPE

Product characteristics

Corrosion resistance

High temperature resistance

Thermal stability

Machinability

Application area

Petroleum, aerospace, chemical industry, power plant, nuclear furnace, military industry

Classification:

Monel INCONEL Hastelloy nickel

Standards:

APISL、ASTM、A106 GrB、ASTM、A53 GrB

ASTMA179/A192/A213/A210/370WP91.WP11

Surface treatment:

Black paint varnish, antirust oil, hot dip galvanizing

cold galvanizing, 3PE



Wall thickness:

50mm-600mm or as required

External diameter:

20mm-6000mm or as required

Material Quality:

15CrMoG、35CrMo、12Cr1MoVG、10CrMo910、T91(钢研102)、A335P11、A335P12、A335P22、

A335P91、A213T11、A213T12、SA106B、

SA106C、A333GR.1、A333GR.6、ST45.8-I、

12Cr2MoWVTiB



ALLOYCOL

Product characteristics

Corrosion resistance

High temperature resistance

Thermal stability

Machinability

Application area

Bridges, industrial furnaces, shipbuilding, armor, automobiles, roofing, electricals

Classification:

Monel INCONEL Hastelloy nickel

Standards:

APISLASTM A106 GrB, ASTM A53 Gr.B

ASTMA179/A192/A213/A210/370WP91.WP11

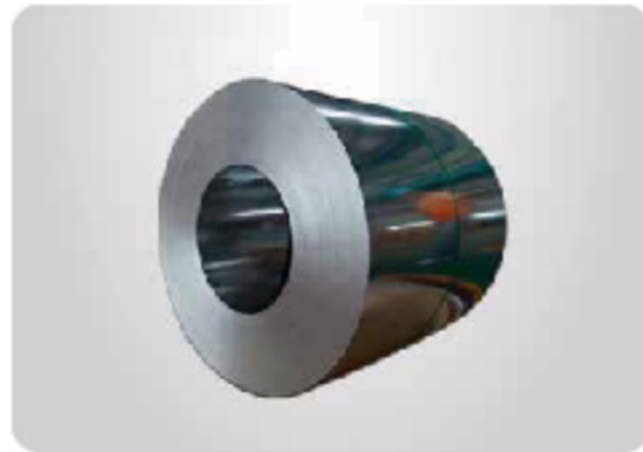
Material Quality:

15CrMoG, 35CrMo, 12Cr1MoVG, 10CrMo910,

T91(钢研102), A35P11, A335P12, A335P22,

A335P91, A213T11, A213T12, SA106B, SA106C,

A333GR1, A333GR.6, ST45.8-II, 12Cr2MoWVTIB



Thickness :

0.1mm-30mm or as required

External diameter:

1.5m-3.5m or as required

Surface treatment:

Black paint, varnish, anti-rust oil, hot dip galvanizing,

cold galvanizing, 3PE



ALLOY BAR

Product characteristics

Corrosion resistance

High temperature resistance

Thermal stability

Machinability

Application area

Petroleum, aerospace, chemical industry, power, boilers, military industry

Classification:

Monel INCONEL Hastelloy nickel

Standards:

APISLASTMA106GrB, ASTM A53 Gr.B

ASTMA179/A192/A213/A210/370WP91.

WP11

Surface treatment :

Black paint, varnish, anti-rust oil, hot dip

galvanizing, cold galvanizing, 3PE



Length:

2m-6m or as required

External diameter:

20mm-600mm or as required

Material Quality:

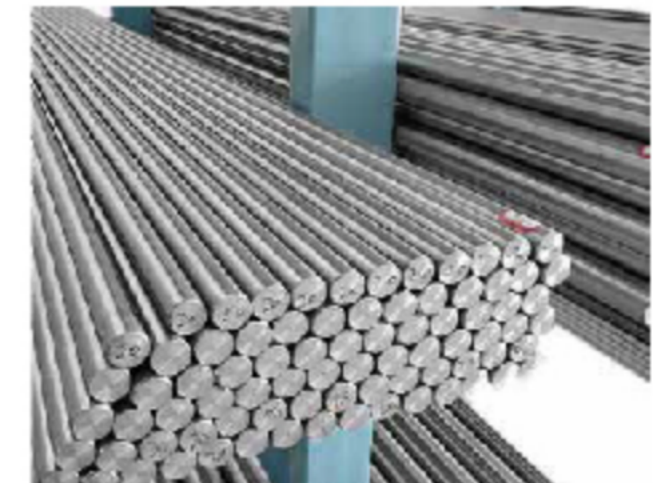
15CrMoG, 35CrMo, 12Cr1MoVG, 10CrMo910,

T91(钢研102), A335P11, A335P12, A335P22,

A335P91, A213T11, A213T12, SA105B,

SA106C, A333GR1, A333GR.6, ST45.8-II,

12Cr2MoWVTIB





STAINLESS STEEL SERIES

Stainless steel plate

Stainless steel coil

Stainless steel strip

Stainless steel pipe

Stainless steel bar

Stainless steel angle

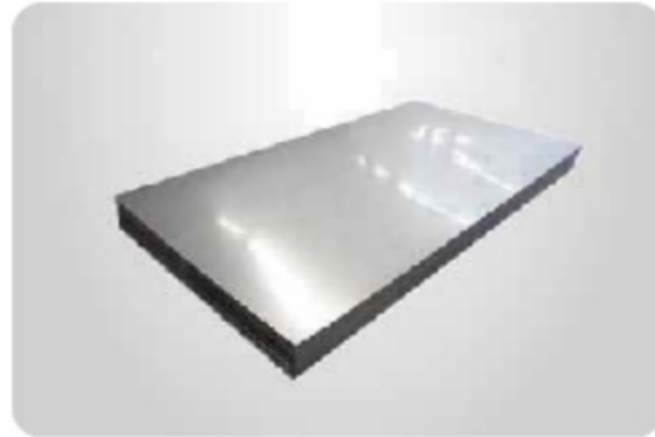
Stainless steel flat

Stainless steel channel

STAINLESS STEEL PLATE

Product characteristics

Corrosion resistance
High temperature
resistance Thermal
stability
Machinability



Application area

Bridges, boilers, shipbuilding, armor, automobiles, roofing, electricians

Standards:

AISI ASTM DIN JIS GB TS SUS EN

Length and width:

3mm-2000mm or as required

Surface treatment:

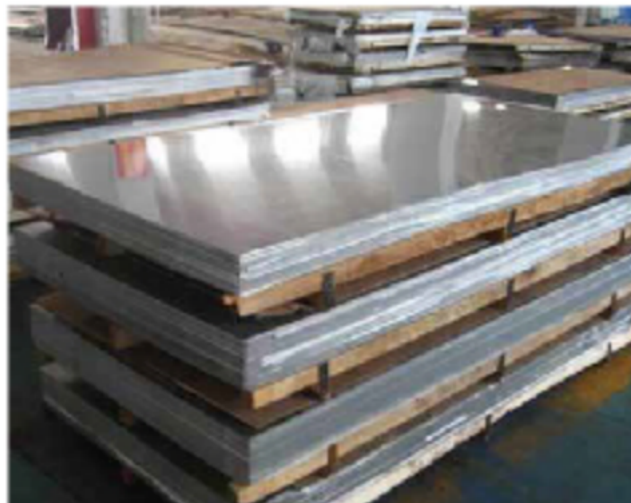
No. 1.2B. No. 4.8k mirror surface or as per customer requirements

Thickness:

0.1mm-300mm or as required

Material Quality:

201, 202, 304, 304L, 316, 316L, 317L, 347HI, 310S, 309S, 430, 904L, 2205, 2507



STAINLESS STEEL COIL

Product characteristics

Corrosion resistance
High temperature
resistance Thermal
stability
Machinability



Application area

Building kitchenware, tableware, vehicles, household appliances

Standards:

AISI ASTM DIN JIS GB TS SUS EN

Length and width:

3mm-2000mm or as required

Surface treatment:

NO.1.2B NO.4.8K Minor or according to customer requirements

Thickness:

0.1mm-30mm or as required

Material Quality:

201, 202, 304, 304L, 316, 316L, 317L, 347HI, 310S, 309S, 430, 904L, 2205, 2507



STAINLESS STEEL STRIP

Product characteristics

Picking oomtemperature oling.
proxestubriation.annealing level lng.
fne cauting pacaging

Appicabonarea

Bridges, boilers shipbuilding, armor,
automobiles, roofing, electricians

Standards.

AISI ASTM DINJISGBIS SUS EN

Length and width:

3mm-200mm or asreyuired

Surface treatment:

NO12BNO4.8K Minor oracortdingto
customer egyu'emert;



Thickness:

0.1mm-30mm or asrequired

Material Quality:

201、 202、 304、 304L、 316、 316L、 317L、
347H、 3105、 3095、 430、 904L、 2205、
2507

STAINLESS STEEL PIPE

Product characteristics

Highprecision
hihtempenthure oataton reitmce
lowhardnes
machinabulty

Appicabonarea

Petrochemical, medica food, light industry, machinery a
nd instruments

Standards.

AISI ASTM DINJISGBIS SUS

EN Wal thickness.

1mm-150mm(SCH10-xxS)

Wal thickness:

6mm 2500mm(3/8~-100')

Surface treatment.

Acid wah finish, NOL.2B po isting Haitine,NO4,
mitror

Material Quality:

201、 202、 304、 304L、 316、 316L、 317L、
347H、 3105、 3095、 430、 904L、 2205、 2507



STAINLESS STEELBAR

Product characteristics

Corrosion resistance

High temperature resistance

Thermal stability

Machinability

Application area

Hardware, kitchenware, shipbuilding, petrochemical machinery, medical care, food

Standards:

AISI ASTM DIN JIS GB TS SUS EN

Diameter:

0.1mm-500mm or as required

Surface treatment:

Black, peeled, polished, shiny, hairline etc.

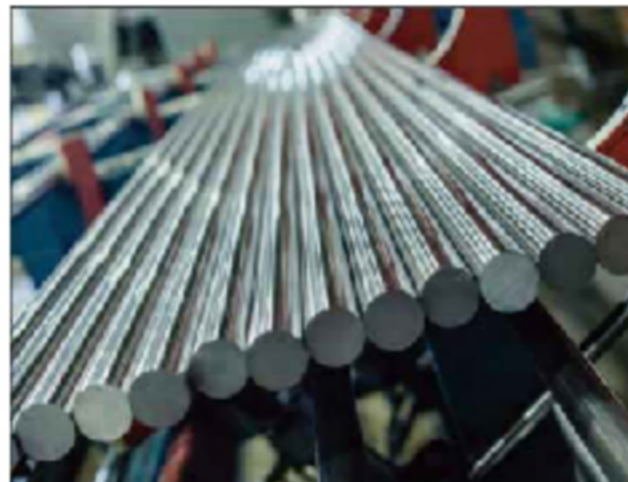


Length:

2m 5m 6m or as required

Material Quality:

201, 202, 301, 302, 303, 304, 304L, 304H, 310S, 316, 316L, 317L, 321, 310S, 309S, 410, 410S, 420, 430, 431, 440A, 904L, etc.



STAINLESS STEEL ANGLE

Product characteristics

Corrosion resistance

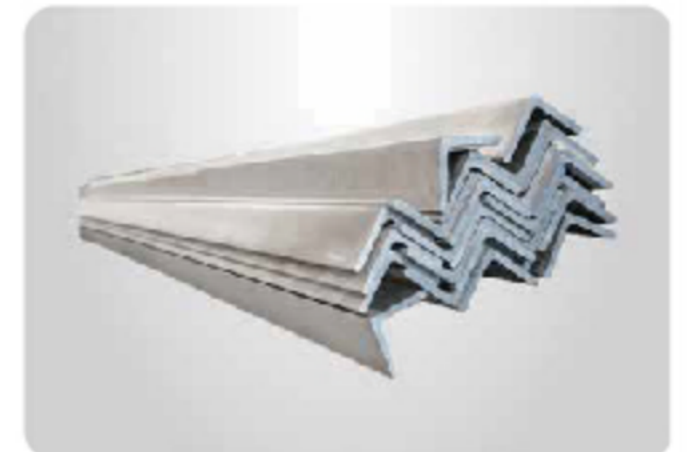
High temperature resistance

Thermal stability

Machinability

Application area

Beams, Bridges, transmission towers, lifting and transportation machinery



Standards:

AISI ASTM DIN JIS GB TS SUS EN

Length:

2m 5m 6m or as required

Surface treatment:

Black, peeled, polished, shiny, hairline, etc.

Dimensions:

1-150 (SCH10-XXS)

Material Quality:

201, 202, 301, 302, 303, 304, 304L, 304H, 310S, 316, 316L, 317L, 321, 310S, 309S, 410, 410S, 420, 430, 431, 440A, 904L, etc.



STAINLESS STEEL FLAT

Product characteristics

- Corrosion resistance
- High temperature resistance
- Thermal stability
- Machinability



Application area

Beam, bridge, transmission tower, shipbuilding industry, furnace

Standards:

AISI ASTM DIN JISGBJIS SUS EN

Diameter:

0.1mm-500mm or as required

Surface treatment:

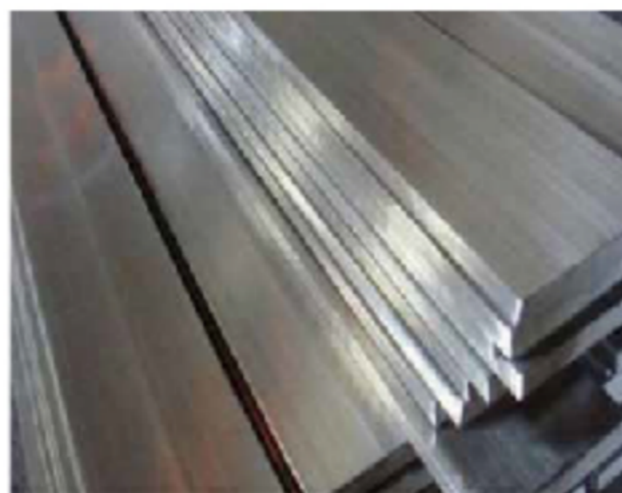
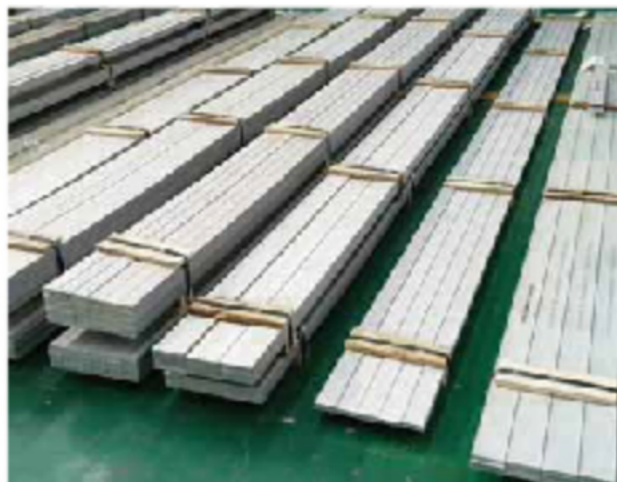
Black, peeled, polished, shiny, hairline, etc.

Length:

2m 5m 6m or as required

Material Quality:

201, 202, 301, 302, 303, 304, 304L, 304H, 310S, 316, 316L, 317L, 321, 310S, 309S, 410, 410S, 420, 430, 431, 440A, 904L, etc.



STAINLESS STEEL CHANNEL

Product characteristics

- Corrosion resistance
- High temperature resistance
- Thermal stability
- Machinability



Application area

Building structures, vehicle manufacturing and other industrial structures

Standards:

AISI ASTM DIN JISGBJIS SUS EN

Surface treatment:

Black, peeled, polished, shiny, hairline, etc.

Length:

2m 5m 6m or as required

Dimensions:

1-150(SCH10-XXS)

Material Quality:

201, 202, 301, 302, 303, 304, 304L, 304H, 310S, 316, 316L, 317L, 321, 310S, 309S, 410, 410S, 420, 430, 431, 440A, 904L, etc.





COLOR COATING SERIES

Color coated coil
Roofing sheet

CoLORCOATED COL

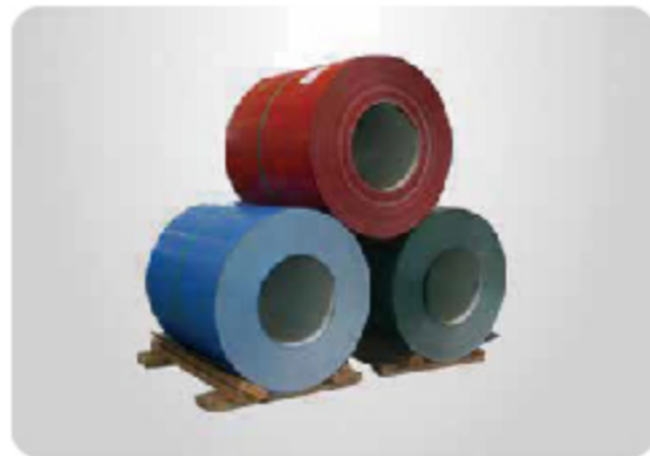
Product characteristics

- Corosionresistance
- Hightampenathure reis tnce
- Thermal stablity
- Machina blty

Applicationarea

Beam, bridge, transmission tower, shipbuil ding industry furnace

- Standards :
ASTM.DIN,IS,BS,GB/T
- Color:
Customized color:RAL color customized,or customizad according to the ample
- Zine coating :
30-275g/m2



- Width,
600mm-1500mmor as required
- Thickness:
0.12mm-6.00mm orasrequired
- Material Quality:
Dx51D)、 Dx52D、 Dx53D、 Dx54D、 S250GD 、S350GD、 S550GD



ROOFING SHEET

Product characteristics

- Corosionresistance
- Hightampenathure reis tnce
- Thermal stablity
- Machina blty

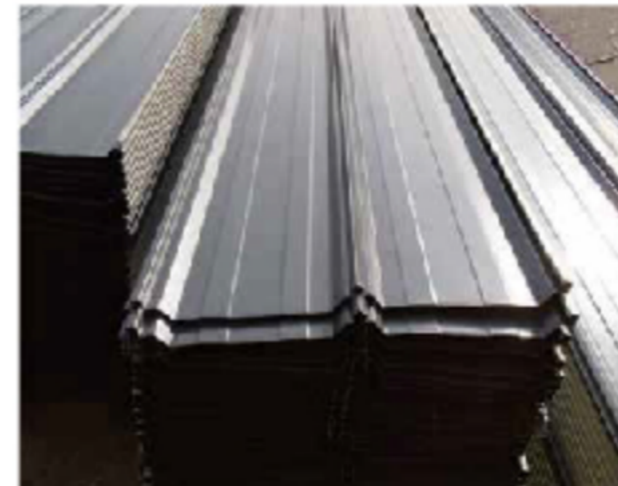
Applicationarea

Building structures, vehicle manufacturing and other industrial structures

- Standards:
ASTMADIN,JIS,BS,GB/T
- Color:
Customized color RAL color customized, orcustomized accordingto the sample
- Zinc coating:
30-275g/m2



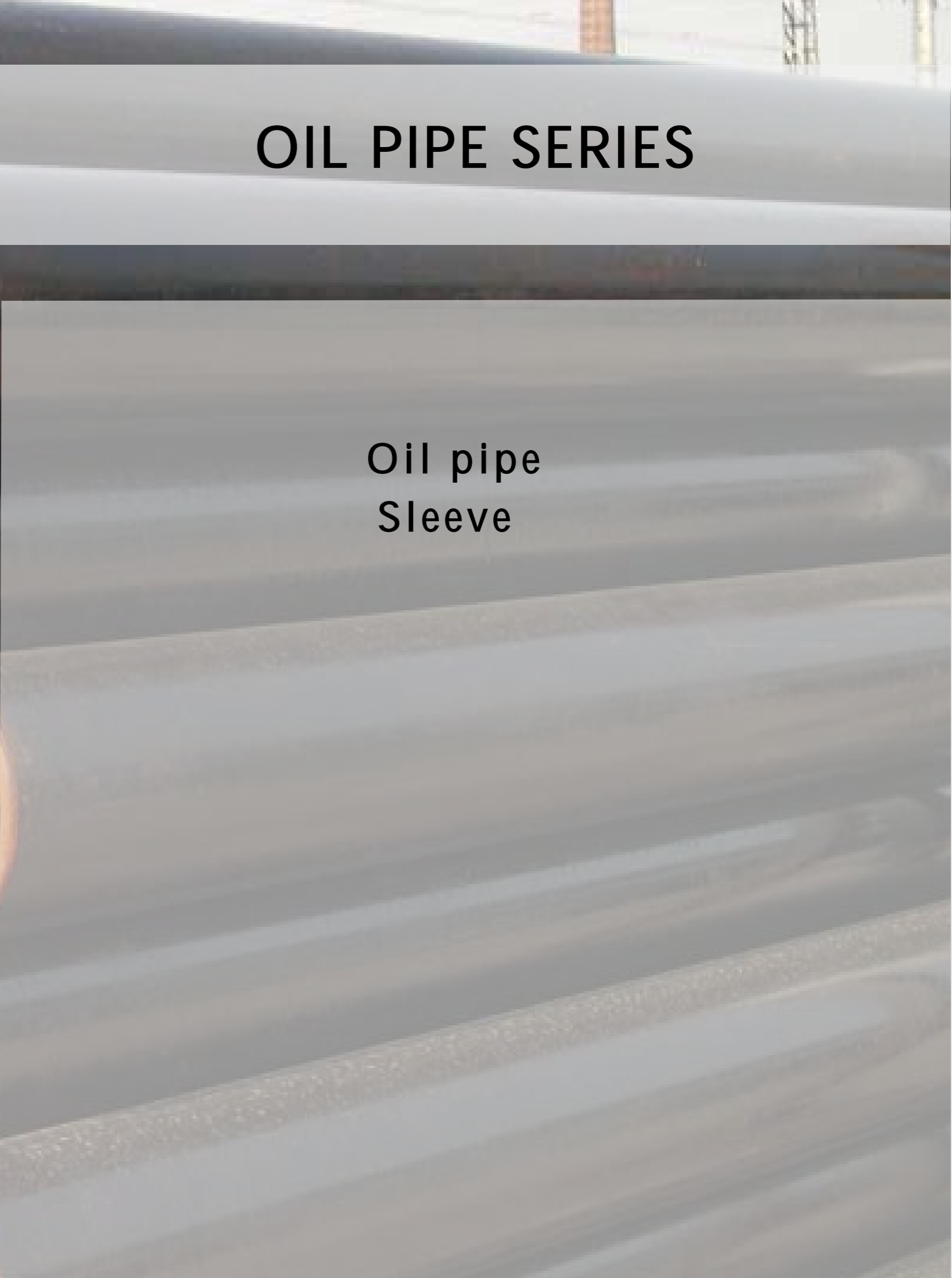
- Width:
600mm-1500mmorasrequired
- Thickness:
0.12mm-6.00mm or asrequired
- Material Quality:
Dx51D、 Dx52D、 Dx53D)、 Dx54D、 S250GD、 S350GD、 S550GD





OIL PIPE SERIES

Oil pipe
Sleeve



Oil pipe

Product characteristics

- High pressure resistance
- Strong sealing performance
- Corrosion resistance
- Anti-crush property
- Strong toughness

Appicabonarea

Oil and gas extraction Wells, downhole operations, oil and gas gathering and transportation

Standards :

API Spec 5CT, ISO 11960

Length:

8m-12m or as needed

Steel grade:

J55, K55, N80, L80, P110



Materi:

- Carbon steel,
- alloy steel,
- stainless steel,
- nickel-based alloys



Sleeve

Product characteristics

- High pressure resistance
- Strong sealing performance
- Corrosion resistance
- Anti-crush property
- Strong toughness

Appicabonarea

Oil and gas extraction, geothermal energy development, water well engineering, geological exploration, and mining

Standards :

API Spec 5CT, ISO 11960

Length:

6m-12m or as needed

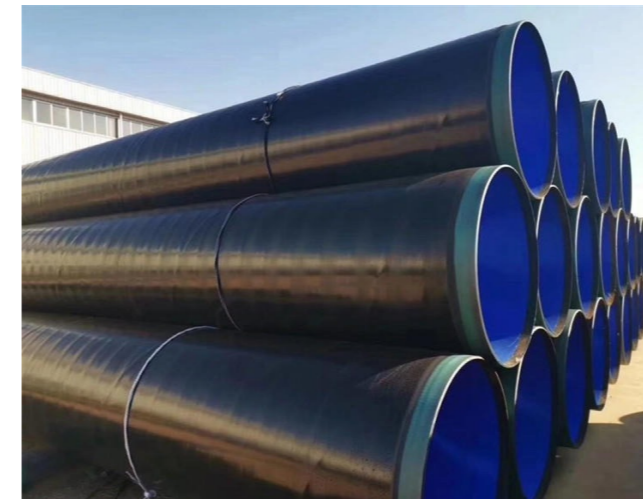
Steel grade:

J55, K55, N80, L80, P110



Materi:

- Carbon steel,
- alloy steel,
- stainless steel,
- nickel-based alloys





PPGI AND PPGL SERIES

PPGI SERIES
PPGL SERIES

DIFFERENT BETWEEN PPGI & PPGL

- PPGI: Pre-painted galvanized steel

PPGI uses galvanized sheets (with a layer of zinc coating) as base metal.

- PPGL: Pre-painted galvalume steel

PPGL is with galvalume sheet as substrate, which is coated with 55% aluminum, 43.3% zinc, and 1.6% silicon.

CATEGORY AND FILM THICKNESS OF PRIMERS

- Epoxy Primer

The epoxy primer has a strong adhesion to the base metal and good properties in waterproof, alkali-proof and chemical resistance.

- Polyester Primer

The epoxy primer has a strong adhesion to the base metal and good properties in waterproof.

- Water-soluble Acrylic Acid Primer

The primer of this kind has strong adhesion, excellent flexibility, lower organic solvent and low temperature curing.

- Polyurethane Primer

The primer of this kind has excellent chemical resistance, durability and flexibility.

CATEGORY AND FILM THICKNESS OF PRIMERS

- Polyester (PET)

The finish coat of this kind has strong adhesive force, a variety of colors.

- Silicon Modified Polyesters (SMP)

The membrane of the finish coat of this kind has excellent rigidity, abrasion resistance.

- High-Durability Polyester (HDP)

The finish coat of this kind has excellent retention of color.

- Polyvinylidene Fluoride (PVDF)

The finish coat of this kind features in its excellent retention of color.

PPGI&PPGLCoIL

Product characteristics

- Good corrosion resistance
- High heat resistance
- Good reflectivity
- Good processing performance
- Good decorative effect
- Good welding performance



Application field

Construction industry, home appliance industry, solar energy industry, building hardware, automotive industry, electrical equipment

PPGI

The product obtained by coating the organic coating on the hot-dip galvanized steel plate is the hot-dip galvanized color coated plate. In addition to the protection of zinc, the organic coating on the surface of the hot-dip galvanized color coated plate also plays the role of isolation protection and rust prevention.

Thickness	0.13mm-0.8mm
Width	600mm-1250mm
Length	Support Customization
Color	According To Ral Color Card (Custom Patterns Can Be Provided)
Coating	PE/SMP/HDP/PVDF
Coating Thickness	Top: 10-30mic/Back: 5-25mic

PPGI&PPGL Plate

Product characteristics

- Strong wear resistance
- Strong chemical corrosion resistance
- Good self-cleaning property
- Good processing performance
- The coating has strong adhesion



Application field

Roof and wall coverings, architectural decoration, building accessories, home appliance shells and inner tank components, solar water heaters, solar photovoltaic power generation, vehicle body parts, product packaging

PPGL

The hot-dip aluminum zinc steel plate (55% Al Zn) is used as the newly coated substrate, and the aluminum zinc content is usually 150g/m² (double-sided). The corrosion resistance of hot-dip aluminized zinc sheet is 2-5 times that of hot-dip galvanized sheet. It is an ideal building material to save energy.

Thickness	0.12mm-2.5mm or Customized As Required
Width	600mm-1500mm or Customized As Required
Length	1-12m or Customized As Required
Color	According To Ral Color Card (Custom Patterns Can Be Provided)
Coating	PE/SMP/HDP/PVDF
Coating Thickness	Top: 10-30mic/Back: 5-25mic



NM PLATE SERIES

NM300

NM360

NM400

NM450

NM500

NM550

NM600

NMPLATES

Product characteristics

High strength and wear resistance
Good processing performance

Application field

Thermal power plants, coal yards, cement plants, loading machinery, mining machinery, construction machinery, engineering machinery, metallurgical machinery

The specifications of NM plates

Thickness: 6mm to 100mm

Width: Between 1500mm and 3900mm

Length: 6000mm to 18000mm or as

required

MECHANICAL PROPERTY OF NM PLATES

Brand	Thickness(mm)	YS Rel MPa	TS Rm MPa	Elongation	%Hardness
NM360	10-50	≥620	725-900	≥16	320-400
NM400	10-50	≥620	725-900	≥16	380-460
NM450	10-50	1250-1370	1330-1600	≥20	410-490
NM500	10-50	/	/	≥24	480-525

CHEMICAL COMPOSITION OF NM PLATES

Brand	C	Si	Mn	P	S	Cr	Mo	Ni	B
NM360	≤0.17	≤0.50	≤1.5	≤0.025	≤0.015	≤0.70	≤0.40	≤0.50	≤0.005
NM400	≤0.24	≤0.50	≤1.6	≤0.025	≤0.015	0.4~0.8	0.2~0.5	0.2~0.5	≤0.005
NM450	≤0.26	≤0.70	≤1.6	≤0.025	≤0.015	≤1.50	≤0.05	≤1.0	≤0.004
NM500	≤0.38	≤0.70	≤1.7	≤0.020	≤0.010	≤1.20	≤0.65	≤1.0	0

The image features a collection of aluminum products. On the left, there are several cylindrical tubes of varying diameters and lengths, some stacked. In the center, there are rectangular aluminum bars or plates. On the right, there are more tubes, some of which are coiled into a spiral. The background is a light, neutral color, and the overall composition is clean and industrial.

ALUMINUM SERIES

Aluminum Plate

Aluminum Tubes

Aluminum Bar

Aluminum Coil

Aluminum Row

ALUMINUMPIATE

Product characteristics

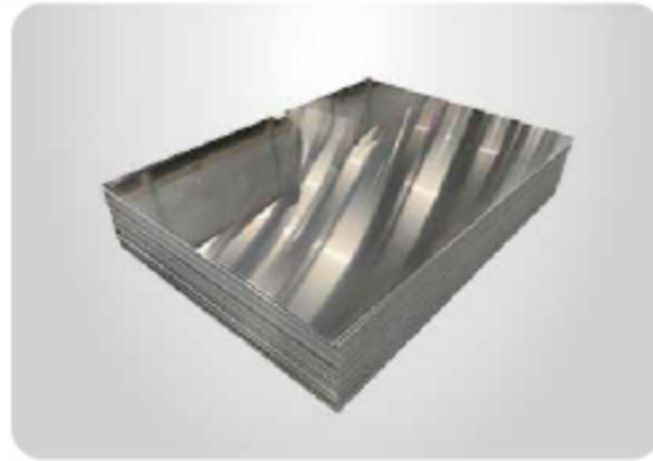
Corrosion resistance

High temperature resistance

Thermal stability

Machinability

Application area



Architectural appearance, interior decoration, ceiling and wall, furniture, cabinets, elevator

Standard:

ASTM B209 JIS H4000-2006 GB/T3190-2008
GB/T3880-2006 etc

Material:

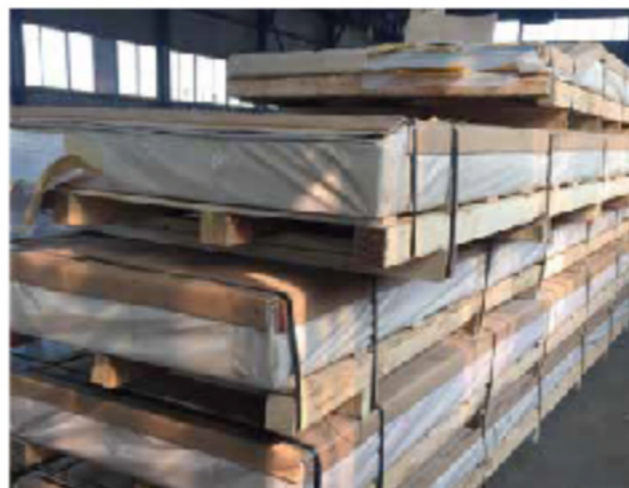
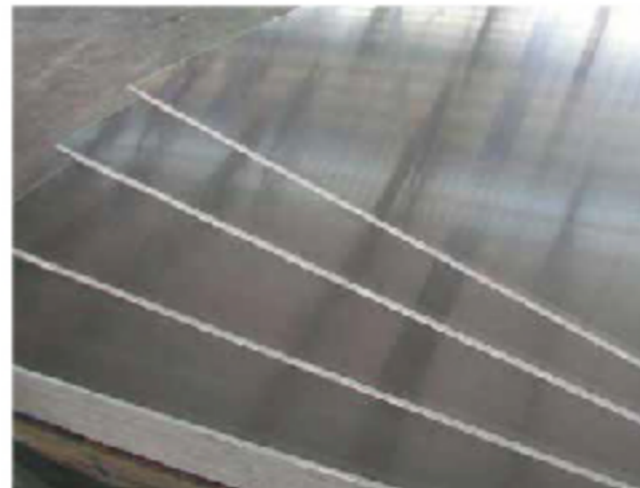
1050, 1060, 1070, 1100, 1200, 1235,
3003, 3004, 3005, 3105, 3A21, 5005,
5052, 5083, 5154, 5182, 5251, 5754,
6061, 6063, 6082 etc

Width:

20mm-1550mm or as required

Thickness:

0.12mm-6.00mm or as required



ALUMINUM Coil

Product characteristics

Corrosion resistance

High temperature resistance

Thermal stability

Machinability

Application area -



Architectural appearance, interior decoration, ceiling and wall, furniture, cabinets, elevator

Standard:

ASTM B209 JIS H4000-2006 GB/T3190-2008
GB/T3880-2006 etc

Material:

1050, 1060, 1070, 1100, 1200, 1235,
3003, 3004, 3005, 3105, 3A21, 5005,
5052, 5083, 5154, 5182, 5251, 5754,
6061, 6063, 6082 etc

Width:

20mm-1550mm or as required

Thickness:

0.2mm-3.00mm or as required



ALUMINUM BAR

Product characteristics

Corrosion resistance
High temperature resistance
Thermal stability
Machinability

Application area:

Architectural exterior/upholstery/ceiling/wall/furniture/ cabinet/
elevator

Standards:

ASTM B209 JIS H4000-2006 GB/T 3190-2008
GB/T 3880-2006 etc.

Material Quality:

1050、1060、1070、1100、1200、1235、3003、
3004、3005、3105、3A21、5005、5052、5083、
5154、5182、5251、5754、6061、6063、6082etc.



Diameter:

0.8mm-120mm or as required

Length:

5.8m/6.0m/12.0m or as required



ALUMINUM PIPE

Product characteristics

Corrosion resistance
High temperature resistance
Thermal stability
Machinability

Application area:

Architectural exterior/upholstery/ceiling/wall/furniture/ cabinet/
elevator

Standards:

ASTM B209 JIS H4000-2006 GB/T 3190-2008
GB/T 3880-2006 etc.

Material Quality:

1050、1060、1070、1100、1200、1235、
3003、
3004、3005、3105、3A21、5005、5052、
5083、
5154、5182、5251、5754、6061、6063、
6082etc.



Shape:

Round Square Rectangular etc

Length:

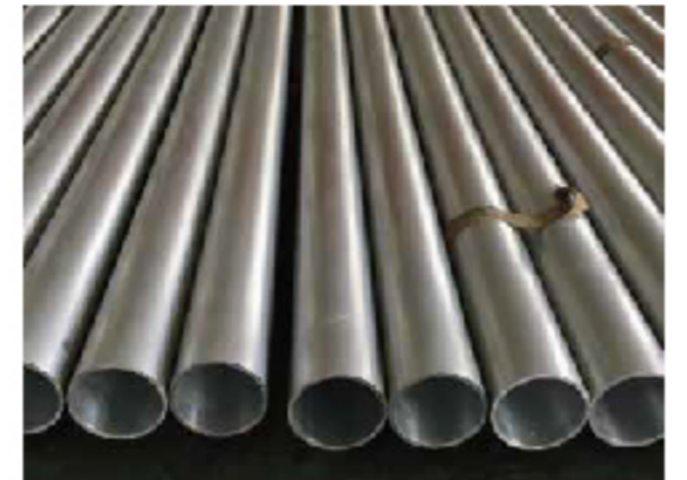
5.8m/6.0m/12.0m or as required

Thickness:

0.2mm-120mm or as required

Out Diameter:

2mm-910mm or as required



ALUMINUM INGOT

Product characteristics

Conductivity Thermal
Conductivity Corrosion
Processability

Application area

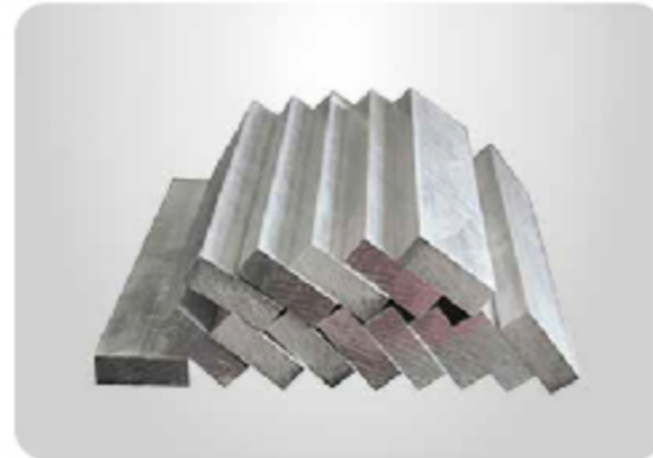
House, bridge, transmission tower, ship, industrial furnace

Standards:

ASTM B209 JIS 1H4000-2006 GB/T 3190-2008
GB/T3880-2006 etc.

Material Quality:

1050, 1060, 1070, 1100, 1200, 1235, 3003,
3004, 3005, 3105, 3A21, 5005, 5052, 5083,
5154, 5182, 5251, 5754, 6061, 6063, 6082 etc.



Diameter:

823*183*110 mm

Weight:

25 kg/pcs

Models:

AL99.90, AL99.85, AL99.70A, AL99.70,
AL99.60, AL99.50, AL99.00 etc.



ALUMINIZED COIL

Product characteristics

Corrosion resistant
High temperature antioxidant
Thermal stable
Machinable

Application area

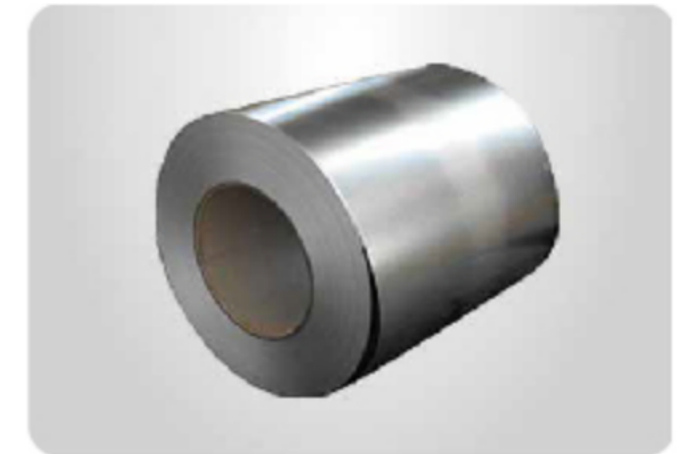
Building construction, vehicle manufacturing and other industrial structures

Standards:

JIS G3302 ASTM A653M EN10327 DIN17162
EN 10142 EN10147 EN10292 JIS G3302.

Material Quality:

DX51D+A, DX52D+A, DX53D+A,
DX54D+A, S220GD+A, DX51D+A,
SGCC, A653 etc



Width:

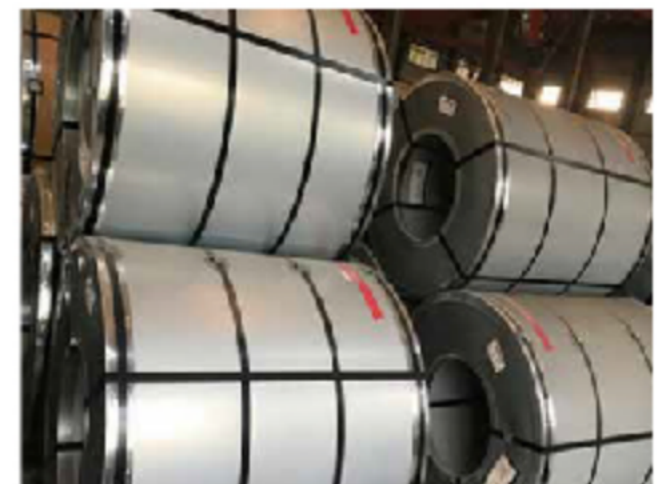
20mm-1550mm or as required

Thickness:

0.2mm~6.0mm or as required

Coating:

A30-A600g/m²





COPPER SERIES

Copper Plate

Copper Pipe

Copper Bar

Copper Coll

Copper wire

Copper scrap

COPPER PLATE

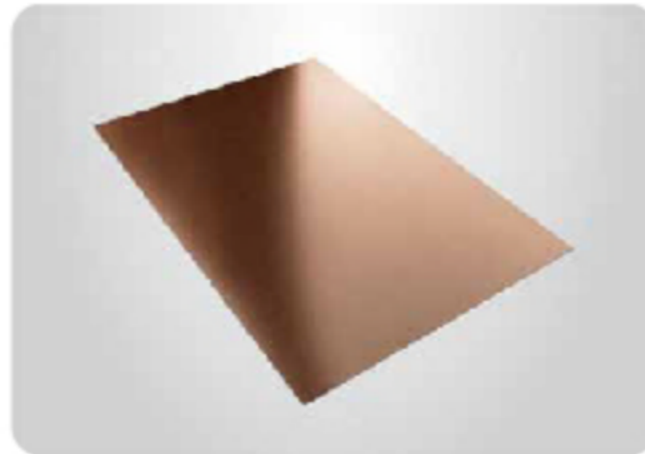
Product characteristics

Conductivity

Thermal Conductivity

Corrosion Resistance

Machinability



Application area:

Power Delivery, Motor Manufacturing,
Communication Cable, Residential Electrical Wiring

Standards:

GB DIN EN JIS ISO UNS

Material Quality:

TU2 T2 TP2 H90 H62, C10100, C10200,
C10300, C10400, C10500, C10700, C10800,
C10910, C10920, C10930, etc

Width:

20mm-1550mm or as required

Thickness:

0.3mm~100mm or as required



COPPER PIPE

Product characteristics

Conductivity

Thermal Conductivity

Corrosion Resistance

Machinability



Application area:

Power transmission, motor manufacturing,
communication cables, residential, electrical, lines

Standards:

GB DIN EN JIS ISO UNS

Material Quality:

TU2 T2 TP2 H90 H62, C10100,
C10200, C10300, C10400, C10500,
C10700, C10800, C10910, C10920,
C10930, etc

Outer Diameter:

2mm-910mm or as required

Thickness:

0.2mm-120mm or as required

Length:

5.8m/6.0m/12.0m or as required

Shape:

Round Square Rectangular etc



COPPER BAR

Product characteristics

- Conductivity
- Thermal Conductivity
- Corrosion Resistance
- Machinability

Application area:

House, bridge transmission tower, ship, industrial furnace

Standards:

GB DIN EN JIS ISO UNS

Material Quality:

TU2 T2 TP2 H90 H62, C10100, C10200, C10300, C10400, C10500, C10700, C10800, C10910, C10920, C10930, etc

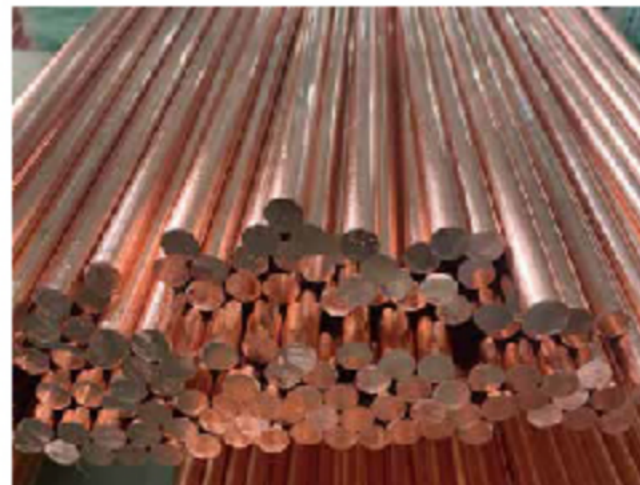


Diameter:

600mm-1500mm or as required

Length:

0.12mm-6.00mm or as required



COPPER PIPE

Product characteristics

- Corrosion resistant
- High temperature antioxidant
- Thermally stable
- Machinable

Application area:

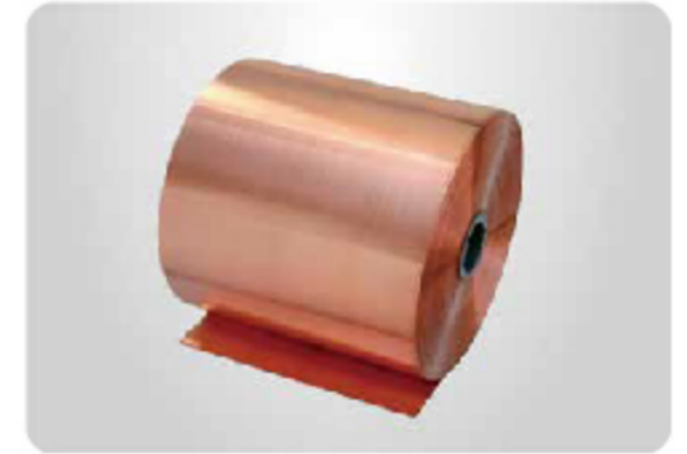
Building structures, vehicle manufacturing and other industrial structures

Standards:

GB DIN EN JIS ISO UNS

Material Quality:

TU2 T2 TP2 H90 H62, C10100, C10200, C10300, C10400, C10500, C10700, C10800, C10910, C10920, C10930, etc



Width:

20mm-1550mm or as required

Thickness:

0.3mm-60mm or as required



CoPPER WRT

Product characteristics

- Corrosion resistant
- Highly ductile
- High wear resistance
- Machinability

Application area:

Power Delivery, Motor Manufacturing,
Communication Cable, Residential Electrical Wiring

Size :

7/0 gauge to 32 gauge
12.7mm to 0.27mm

Standards:

GB DIN EN JIS ISO UNS

Material Quality:

TU2 T2 TP2 H90 H62, C10100, C10200,
C10300, C10400, C10500, C10700, C10800,
C10910, C10920, C10930, etc

COMPARISON TABLE OF COPPER ALLOY GRADES 铜合金牌号对照表

一、铅黄铜牌号对照表

中国牌号	日本牌号	德国牌号	美国牌号	英国牌号
GB	JIS	DIN	ASTM	BS
HPb59-1	C3710	CuZn40Pb2	C37000	CZ120
HPb59-3	C3561	CuZn40Pb3	C37710	CZ121Pb3
HPb60-2	C3771	CuZn39Pb2	C37700	CZ120
HPb62-2	C3713	CuZn38Pb2	C35300	CZ119
HPb62-3	C3601	CuZn36Pb3	C36000	CZ124
HPb63-3	C3560	CuZn36Pb3	C35600	CZ124

二、普通黄铜牌号对照表

中国牌号	日本牌号	德国牌号	美国牌号	英国牌号
GB	JIS	DIN	ASTM	BS
H59	C2800	CuZn40	C28000	CZ109
H62	C2720	CuZn40	C27400	CZ109
H65	C2680	CuZn35	C27000	CZ107
H68	C2600	CuZn30	C26000	CZ106
H70	C2600	CuZn30	C26000	CZ106
H80	C2400	CuZn20	C24000	CZ103
H85	C2300	CuZn15	C23000	CZ102
H90	C2200	CuZn10	C22000	CZ101
H96	C2100	CuZn5	C21000	--

三、紫铜牌号对照表

名称	中国牌号	日本牌号	德国牌号	美国牌号	英国
NAME	GB	JIS	DIN	ASTM	BS
零号无氧铜	TU0	C1011	--	C10100	C110
一号无氧铜	TU1	C1020	OF-Cu	C10200	C103
二号无氧铜	TU2	C1020	OF-Cu	C10200	C103
一号铜	T1	C1020	OF-Cu	C10200	C103
二号铜	T2	C1100	SE-Cu	C11000	C101
三号铜	T3	C1221	--	--	--
一号磷脱氧铜	TP1	C1201	SW-Cu	C12000	--
二号磷脱氧铜	TP2	C1220	SF-Cu	C12000	--

STAINLESS STEEL MATERIAL COMPOSITION TABLE

各国铜牌号及标准对照表

中国	德国	欧洲	国际标准	美国	日本		
GB	DIN	EN	ISO	UNS	JIS		
TU2	OF-Cu	2.0040	Cu-OFE	CW009A	Cu-OF	C10100	C1011
—	SE-Cu	2.0070	Cu-HCP	CW021A	—	C10300	—
—	SE-Cu	2.0070	Cu-PHC	CW020A	—	C10300	—
T2	E-Cu58	2.0065	Cu-ETP	CW004A	Cu-ETP	C11000	C1100
TP2	SF-Cu	2.0090	Cu-DHP	CW024A	Cu-DHP	C12200	C1220
—	SF-Cu	2.0090	Cu-DHP	CW024A	Cu-DHP	C12200	C1220
—	SF-Cu	2.0090	Cu-DHP	CW024A	Cu-DLP	C12200	C1220
TP1	SW-Cu	2.0076	Cu-DLP	CW023A	Cu-DLP	C12000	C1201
H96	CuZn5	2.0020	CuZn5	CE500L	CuZn5	C21000	C2100
H90	CuZn10	2.0030	CuZn10	CW501L	CuZn10	C22000	C2200
H85	CuZn15	2.0040	CuZn15	CW502L	CuZn15	C23000	C2300
H80	CuZn20	2.0050	CuZn20	CW503L	CuZn20	C24000	C2400
H70	CuZn30	2.0065	CuZn30	CW505L	CuZn30	C26000	C2600
H68	CuZn33	2.0080	CuZn33	CW506L	CuZn35	C26800	C2680
H65	CuZn36	2.0335	CuZn36	CW507L	CuZn35	C27000	C2700
H63	CuZn37	2.0321	CuZn37	CW508L	CuZn37	C27200	C2720
HPb63-3	CuZn36Pb1.5	2.0331	CuZn35Pb1	CW600N	CuZn35Pb1	C34000	C3501
HPb63-3	CuZn36Pb1.5	2.0331	CuZn35Pb2	CW601N	CuZn34Pb2	C34200	—
H62	CuZn40	2.0360	CuZn40	CW509N	CuZn40	C28000	C3712
H60	CuZn38Pb1.5	2.0371	CuZn38Pb2	CW608N	CuZn37Pb2	C35000	—
HPb63-3	CuZn36Pb3	2.0375	CuZn36Pb3	CW603N	CuZn36Pb3	C36000	C3601

HPb59-1	CuZn39Pb2	2.0380	CuZn39Pb2	CW612N	CuZn38Pb2	C37700	C3771
HPb58-2.5	CuZn39Pb3	2.0401	CuZn39Pb3	CW614N	CuZn39Pb3	C38500	C3603
—	CuZn40Pb2	2.0402	CuZn40Pb2	CW617N	CuZn40Pb2	C38000	C3771
—	CuZn28Sn1	2.0470	CuZn28Sn1As	CW706R	CuZn28Sn1	C68800	C4430
—	CuZn31Si1	2.0490	CuZn31Si1	CW708R	CuZn31Si1	C44300	—
—	CuZn20Al2	2.0460	CuZn20Al2As	CW702R	CuZn20Al2	C68700	C6870
QSn4-0.3	CuSn4	2.1016	CuSn4	CW450K	CuSn4	C51100	C5111
—	CuSn5	2.1018	CuSn5	CW451K	CuSn5	C51000	C5102
QSn6.5-0.1	CuSn6	2.1020	CuSn6	CW452K	CuSn6	C51900	C5191
QSn8-0.3	CuSn8	2.1030	CuSn8	CW453K	CuSn8	C52100	C5210
BZn12-24	CuNi12Zn24	2.0730	CuNi12Zn24	CW403J	CuNi12Zn24	C75700	
BZn12-26	CuNi18Zn27	2.0742	CuNi18Zn27	CW410J	CuNi18Zn27	C77000	C7701
BZn18-18	CuNi18Zn20	2.0740	CuNi18Zn20	CW409J	CuNi18Zn20	C76400	C7521
—	CuNi10Fe1Mn	2.0872	CuNi10Fe1Mn	CW352H	CuNi10Fe1Mn	C70600	C7060
—	CuNi30Mn1Fe	2.8820	CuNi30Mn1Fe	CW354H	CuNi30Mn1Fe	C71500	C7150

CASE INTRODUCTION



GRADE COMPARISON OF CARBON STEEL

碳素钢材质等级对比

中国	德国		法国	国际标准	日本	瑞典	英国	美国		
GB	DIN	W-Nr	NF	ISO	JIS	SS	BS	ASTM		
Q195 (A1,B1)	S185 (st33)	1.0035	S185 (A33)	HR2			S185 (140A10)	A285M Gr.B		
Q215A	USt34-2		A34		HR1	SS 330 (SS34)	1370		040A12	A283M Gr.C
A215B (A2,C2)	RSt34-2	1.0034	A34-2NE					A573M Gr 58		
Q235A	S235JR	1.0037	S235JR	Fe 360A	SS 400 (SS41)	1311	S235JR	A570 Gr.A		
Q235B	S235JRG1	1.0036	S235JRG1	Fe 360D		1312		A570 Gr.D		
Q235C	S235JRG2 (St 37-2) (USt 37-2) (RSt 37-2)	1.0038	S235JRG2 (E24-2) (E24-2NE)				S235JRG1 S235JRG2 (40B.C)	A283M Gr.D		
	Q235D (A3,C3)									
	Q255A		St44-2	1.0044	(E28-2)	SM 400A	1412		43B	A709M Gr.36
	Q255D (A4,C4)					SM 400B (SM 41A) (SM 41B)				
Q275 (C5)	S275J2G3 S275J2G4 (St44-3N)	1.0144 1.0145 1.0055	S275J2G3 S275J2G4	Fe430A	SS 490 SSS0	1430	S275J2G3 S275J2G4 (43D)			
05F	D6-2	1.0314						015A03	1005	
08F	USt4	1.0336					S9CX		≈ 1008	
08			XC6				040A04 050A04	1008		
10F	USt 13							≈ 1010		
10	C10 Ck10	1.0301 1.1121	C10 XC10		S10C	1265	040A10 045M10	1010		
	15	C15 Ck15	1.0401 1.1141	C12 XC15		S15C	1350 1370	040A15 080M15	1015	
20	C22E Ck22	1.1151	C22E XC18		S20C	1435	C22E 070M20	1020		
	25		C25E Ck25	1.1158	C25E XC25	C25E4	S25C	C25E 070M26	1025	

STAINLESS STEEL MATERIAL COMPOSITION TABLE

不锈钢材质成分表

Grade	C	Si	Mn	P	S	Ni	Cr	Mo
201	≤0.15	≤0.75	5.5-7.5	≤0.06	≤0.03	3.5-5.5	16.0-18.0	
202	≤0.15	≤1.0	7.5-10.0	≤0.06	≤0.03	4.0-6.0	17.0-19.0	
301	≤0.15	≤1.0	≤2.0	≤0.045	≤0.03	6.0-8.0	16.0-18.0	
302	≤0.15	≤1.0	≤2.0	≤0.035	≤0.03	8.0-10.0	17.0-19.0	
304	≤0.008	≤1.0	≤2.0	≤0.045	≤0.03	8.0-10.5	18.0-20.0	
304L	≤0.03	≤1.0	≤2.0	≤0.035	≤0.03	9.0-13.0	18.0-20.0	
309S	≤0.08	≤1.0	≤2.0	≤0.045	≤0.03	12.0-15.0	22.0-24.0	
310S	≤0.08	≤1.5	≤2.0	≤0.035	≤0.03	19.0-22.0	24.0-26.0	
316	≤0.08	≤1.0	≤2.0	≤0.045	≤0.03	10.0-14.0	16.0-18.0	2.0-3.0
316L	≤0.03	≤1.0	≤2.0	≤0.045	≤0.03	12.0-15.0	16.0-18.0	2.0-3.0
321	≤0.08	≤1.0	≤2.0	≤0.015	≤0.03	9.0-13.0	17.0-19.0	
630	≤0.07	≤1.0	≤1.0	≤0.035	≤0.03	3.0-5.0	15.5-17.5	
631	≤0.09	≤1.0	≤1.0	≤0.030	≤0.035	6.50-7.75	16.0-18.0	
904L	≤2.0	≤0.045	≤1.0	≤0.035		23.0-28.0	19.0-23.0	4.0-5.0
220S	≤0.03	≤1.0	≤2.0	≤0.030	≤0.02	4.5-6.5	22.0-23.0	3.0-3.5
2507	≤0.03	≤0.8	≤1.2	≤0.035	≤0.02	6.0-8.0	24.0-26.0	3.0-5.0
2520	≤0.08	≤1.5	≤2.0	≤0.045	≤0.03	0.09-0.22	0.24-0.26	
410	≤0.15	≤1.0	≤1.0	≤0.035	≤0.03		11.5-13.5	
430	≤0.12	≤0.75	≤1.0	≤0.040	≤0.03	≤0.60	16.0-18.0	

INTERNATIONAL STEEL PIPE MATERIAL GRADE COMPARISON

国际钢管材质等级对比

钢种 Steel Grade	中国GB	日本JIS		美国ASTM	德国			
	牌号	牌号	标准号	钢号	钢号	材料号	标准号	
碳素 钢管 Carbon Steel Pipe	(Q235)	GCP STPY41	G3452 G3457	(A53 钢种 F) A283-D	(St33)	1.0033	DIN1626	
	10	STPG38	G3454	A135-A A53-A	(St37)	1.0110	DIN1626	
		STPG38	G3456	A106-A	St37-2	1.0112	DIN17175	
		STS38	G3455		St35-8	1.0309	DIN1629/4	
		STB30	G3461	A179-C A214-C	St35-8	1.0305	DIN17175	
		STB33	G3461	A192 A226	St35-8	1.0305	DIN17175	
		STB35	G3461		St35-8	1.0305	DIN17175	
		20	STBG42	G3454	A135-B A53-B	(St42) (St42-2)	1.0130 1.0132	DIN1626
	STPT42		G3456	A106-B	(St45-8)	1.0405	DIN17175	
	STS42		G3461	A106-B	(St45-8)	1.0405	DIN17175	
	STB42		G3455	A178-C A201-A-1	(St45-4)	1.0309	DIN1629/4	
	低合金 钢管 Low Alloy Steel Pipe	16Mn	STS49 STPT49	G3455 G3456	A201-C	St52.4 St52	1.0832 1.0831	DIN1629/4 DIN1629/3
		15MnV	STBL39	G3464				
	低温 钢管 Low temperature steel Pipe	16Mn	STBL39	G3460	A333-1.6	TT St35N	1.0356	SEW680
15MnV		STBL39	G3464	A334-1.6				
09Mn2V				A333-7.9 A334-7.9	TT St35N	1.0356	SEW680	
06AlNbCuN		STBL46 STBL	G3460 G3464	A333-3.4 A334-3.4	10Ni14	1.5637	SEW680	
20Mn23A1				A333-8 A334-8	X8Ni9	1.5662	SEW680	

耐热 钢管 Heat resisting steel pipe	16Mo	STPA12 STBA12 、13	G3458 G3462	A335-P1、A369-FP1 A250-T1、A209-T1	15Mo3	1.5414	DIN17175
	12CrMo	STBA20	G3462	A335-P2、A369-FP2 A213-T2			
	15CrMo	STPA22	G3458	A335-P12、A369-PP12	13CrMo44	1.7335	DIN17175
		STBA22	G3462	A213-T12			
	12Cr1MoV	STPA23 STBA23	G3458 G3462	A335-P11、A369-FP12 A199-T11、A213-T11			
	Gr2Mo 10MoWVNb	STPA24 STBA24	G3458 G3462	A335-P22、A369-FP22 A199-T22、A213-T22	10CrMo910	1.7380	SEW610
不锈 耐酸 钢管 Stainless acid proof steel pipe	Cr5Mo	STPA25 STBA25 STPA26 STBA26	G3458 G3462 G3458 G3462	A335-P5、A389-FP5 A213-T5 A335-P9、A369-FP9 A199-T9、A213-T9	12CrMo195	1.7362	DIN17175
	(1Gr13)	SUS410 TP	G3463	A268 TP410	X10Cr13	1.4006	DIN17440
	(2Gr13)			(SISI 420)	X20Cr13	1.4021	DIN17440
	(1Gr17)	SUS430 TB	G3463	A268 TP430/TP429	X8Cr17	1.4016	DIN17440
	0Cr18Ni9	SUS304 TP/TB	G3459 G3463	A312、A376、TP304 A213、A249、A268 TP304	X5CrNi189	1.4301	DIN17440
	1Cr18Ni9				X10CrNi189	1.4301	DIN17440
	0Cr18Ni10Ti 1Cr18Ni9Ti	SUS321 TP/TB	G3459 G3463	A312、A376、TP321 A213、A249、A268 TP321		1.4541	DIN17440
	0Cr18Ni13Mo2Ti	SUS316 TP/TB	G3459 G3463	A312、A376、TP316 A213、A249、A268 TP316			
	0Cr18Ni13Mo3Ti	SUS317 TP/TB	G3459 G3463	A312、A376、TP316 A213、A249、A268 TP317			
	00Cr18Ni10	SUS304L TP/TB	G3459 G3463	A312、A376、TP34L A213、A249、A268 TP304L	X2CrNi189	1.4306	DIN17440
00Cr17Ni13Mo2	SUS316L TP/TB	G3459 G3463	A312、A376、TP316L A213、A249、A268 TP316L	X2CrNi810	1.4404	DIN17440	
00Cr17Ni13Mo3	SUS317L TP/TB	G3459 G3463	A312、A376、TP317L A213、A249、A268 TP317L				

Data detection



Coating Thk Test



Geometry-Inspection



Ultrasonic Inspection



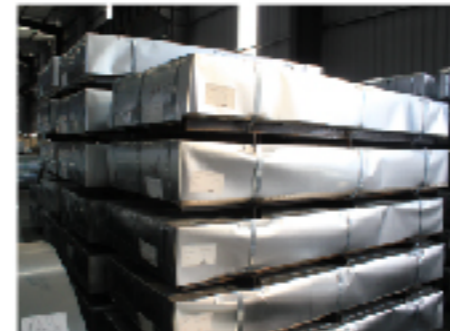
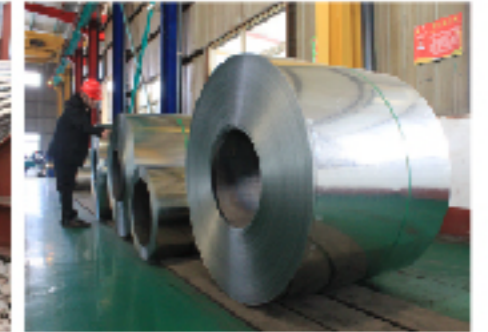
Nondestructive-Testing



Hydrostatic-Testing



Packing & Shipping



POWER MANUFACTURERS
SERVING THE WORLD